



INSPIRED SPACE

FROM FRIENDS OF SACRED STRUCTURES

Needs Increase As Historic Churches Reach Out To Help

Stolen air conditioning units taken right off the side of a church for the valuable copper wire tucked inside, the constant drip of a leaking roof that is slowly ruining a gorgeous sanctuary, a day care center forced to close because the safety of the building put children at risk, these are just a few of the ongoing battles that historic churches must fight every day here in your city.

“What would many neighborhoods look like if there were only rubble-strewn empty lots or another batch of fluorescent-lighted fried chicken outlets where these weathered Romanesque and Gothic Revival structures now stand?”

—*The New York Times*

Friends of Sacred Structures is here to help. *Since 1992, our expert architects, engineers and project managers have been offering their expertise free of charge.* Providing thorough assessments that enable congregations to prioritize urgent projects and plan for maintenance and repairs, sharing access to an extensive referral network of skilled contractors and service providers, and offering project management support throughout the life of a project, FOSS is a key partner in helping preserve the architectural beauty of Kansas City's historic sacred buildings. Now we need your help.

With your generous financial support, FOSS will be able to continue to help historic structures throughout Kansas City fight the renovation and repair battles that they face. Help us ensure that this critical work is accomplished. We need your help to make sure that churches have safe and comfortable spaces to offer vital programs to local residents, families and children. With your contribution, we are helping to preserve Kansas City's history and secure it for the future.

So please take a moment and make your gift today.

For more information, visit our website at www.fosskc.org and read the rest of this newsletter to learn about some exciting collaborations with the Westport Revolution Church and their Neighbor to Neighbor program. Their church is a perfect example of the essential services that sacred structures are providing all over our city.

Have a happy and safe holiday season!

Don Wigger
Board President

Elmer Denis
Fund Development Chair

Inspired Space is published periodically for members and donors to Friends of Sacred Structures (FOSS), 5960 Dearborn, Suite 215, Mission, KS 66202. For articles, story ideas or address change, call: FOSS 816.561.3717, FAX 816.931.8558 or e-mail: fosskc@supportkc.org

Web site: www.fosskc.org

Board Members serve as members of the Communication, Executive, Technical Service, and Finance Committees.

2009 BOARD OF DIRECTORS

Officers:

Don Wigger
President

Elmer Denis,
Vice President

Mary Wiggins
Vice President

Joan DeMerchant
Secretary

Rev. Ken Nettling
Treasurer

Directors:

Wallace Bennett

Jerry Bowman

Ray James

John McKeever

Rev. Jarrett McLaughlin

Joanie Shields

Fred Truog

Rev. Eric Williams

Advisory Council

Alvin Brooks

William Bruning

Rev. Emanuel Cleaver

Sally Firestone

Scott Francis

Vincent Gauthier

Rev. Wallace Hartsfield

John Laney

Wendell Maddox

Rev. Robert Meneilly

Mary Sheppard

Phyllis Stevens

Bishop Mark Tolbert

Kevin Wilson

Foss Plans To Assist With Capital Fundraising

The Board of Directors of Friends of Sacred Structures has voted to undertake a long-range effort aimed at assisting various congregations with capital fundraising. Grant requests are being submitted to various funders. Individual donations are also sought in order to assist these churches in improving their facilities to provide the best possible environment for meeting their goals.

The following criteria will guide FOSS in selecting projects to engage assistance with the fundraising:

1. The project must involve a building that was originally built as a house of worship and be fifty years or older and located within the Kansas City Metropolitan area.
2. The project must provide or plan to provide significant community services.
3. The organization responsible for the project must show evidence of stability, strong leadership and organizational support.
4. FOSS must have an agreement signed by a representative of the owner of the structure.
5. The project must have the endorsement of the Chair of the FOSS Technical Service Team.
6. A Technical Service Representative must provide oversight of the project and approve payments from FOSS funds.
7. Presentation of projects to potential funders will place emphases first on conditions affecting health and safety, second on those that will prevent further damage, and third on those that will improve the efficiency and effectiveness of programs housed in the facilities.

Following a Board overview of recommended sites, Westport/Revolution United Methodist Church, 500 W. 40th St., was selected as the first of several projects, due to its readiness involving community involvement, building improvement and outreach. The proposal follows.

FOSS – Capital Project Funding Request Background



Westport/Revolution United Methodist Church was founded in 1836. The first portion of the present structure was constructed in 1925. A major addition was added later, including a gymnasium with three levels of classrooms and offices above. Membership in the church peaked about 1930 and has mirrored the decline in Westport population since. In 2003 Rev. Eric Huffman was appointed to start a

points of interest

new congregation, Revolution UMC, along side the Westport congregation. The original congregation continued to decline and the new congregation has experienced steady growth.

FOSS assisted in conducting an assessment of the facilities in 1995 that identified several issues to be addressed and established priorities to pursue over time. The congregation repaired the roof, installed new air conditioning equipment, and painted the sanctuary, fellowship hall, gymnasium, and kitchen.

Community Outreach

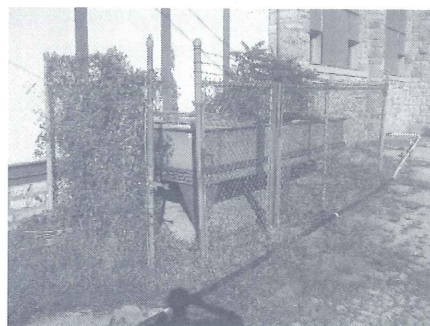
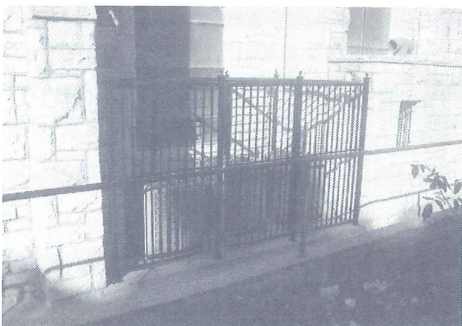
Neighbor to Neighbor is an organization providing services to the homeless and near homeless in the Westport area. It started in 1993 when Dorothy Nail, a volunteer in the church office, began to bring a few sack lunches to give to the needy that came to the door for assistance. From that small beginning the program has grown so that in 2007 it was chartered as n2n Inc., a 501c3 affiliate of the church. During 2009 the program provided the following:

Meals to homeless or near homeless	55,210
Patients seen by Mobile Clinic	619
Persons entering detox and substance abuse counseling	69
Persons involved in education about medical conditions	74
Contacts with social worker/counselor/peer counselor	927
Legal cases resolved	2
Jobs obtained	43
Number of volunteer hours	10,000 +

Foss Plans To Assist With Capital Fundraising, continued to page 4

Church Air-conditioner Theft

Theft of copper from air-conditioners is becoming a common and costly occurrence for many churches. Some churches are enclosing their air-conditioners in a secure manner to prevent loss. Pictured below are two examples of methods for securing air conditioners; the one on the left is a very secure unit, the one on the right was not secure enough. Churches seeking advice may call FOSS at 816-561-3717, leave a name and phone number. Someone will call you back.



Yes, I want to become a Friend of the Friends of Sacred Structures

All members receive a periodic newsletter, invitations to special events and discounts for workshops and events.

Congregational members also receive technical assistance, information and referrals.

- Friend – \$50
- Partner – \$100
- Congregation Partner – \$100
- Corporate Partner – \$150
- Sponsor – \$250
- Patron – \$500
- Sustaining – \$1,000

NAME _____

ADDRESS _____

CITY _____

STATE _____ ZIP _____

PHONE _____

EMAIL _____

- Please contact me about volunteer opportunities with FOSS

MAIL COMPLETED FORM TO:

Friends of Sacred Structures
5960 Dearborn, Ste. 215
Mission, KS 66202

Friends of Sacred Structures is a 501(c)(3) tax exempt agency. All contributions are tax deductible. Thank you for your generous support

An organization dedicated to the preservation of *older* and historic religious structures for active community use. FOSS: Supporting Vital Neighborhood Needs

Friends
of Sacred
Structures



5960 Dearborn, Suite 215,
Mission, KS 66202

Non-Profit
Organization
U.S. Postage
PAID
Kansas City,
MO
Permit NO.
1562

Foss Plans To Assist With Capital Fundraising, *continued from page 3*

The old gymnasium has been converted to a Thrift Store that resembles a mini-department store and contributes about \$1,000 per month to the N2N program.



The Store provides clothing and small household goods at a very minimal cost to anyone who shops there, as well as providing clothes at no cost for those without resources.

The Project

Due to the age and the extensive use and for health reasons, the kitchen is in serious need of remodeling. A ladies' restroom and a men's restroom adjacent to the kitchen and dining area are also extensively used by the Neighbor to Neighbor program and are in need of renovation.

The estimated budget for the project is approximately \$97,000. The Neighbor to Neighbor organization has collected approximately \$30,000 and a plumber has committed his service pro-bono. The Westport/ Revolution United Methodist Congregation will make a contribution. FOSS is seeking \$50,000 in support of the project.